



twist  
collective

# twist collective

## Fall 2012

# SUBMISSION GUIDELINES

### FORMAT

- Please send a PDF (without security)
- All descriptive text should be in the pdf, not the email text

### CONTACT INFO **EACH PAGE** must include the following information:

- Designer's full name
- Designer's mailing address
- Designer's phone number
- Designer's email address

### DESIGN INFO **Each submission should include, AT THE VERY LEAST:**

- Sketch of design showing how it will fit
- Picture of swatch(es)
- Description of your project and how it is constructed. A schematic may also be helpful.
- Yarn requirements - weight, fiber contents (if you have a preference), suggested yarns, etc.
- If we haven't had the chance to work with you before, please tell us about yourself.

**EMAIL YOUR SUBMISSIONS TO [submissions@twistcollective.com](mailto:submissions@twistcollective.com)  
BY JANUARY 19, 2012**

**Knitting and patterns due in March (tentatively)**

*Find additional submission information at  
<http://www.twistcollective.com/collection/index.php/about/39-about/95-submissions>*

*or email [marnie@twistcollective.com](mailto:marnie@twistcollective.com)*



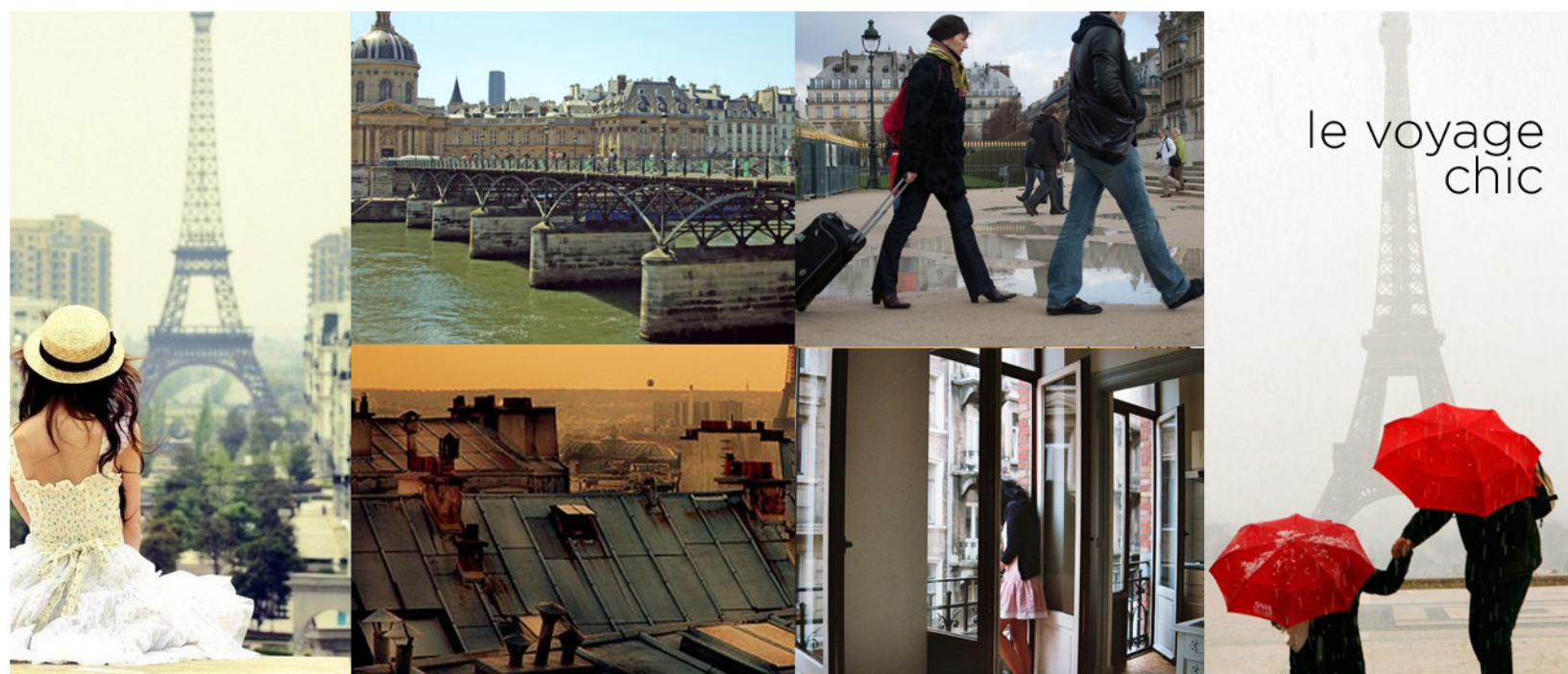
twist collective fall 2012 moodboards



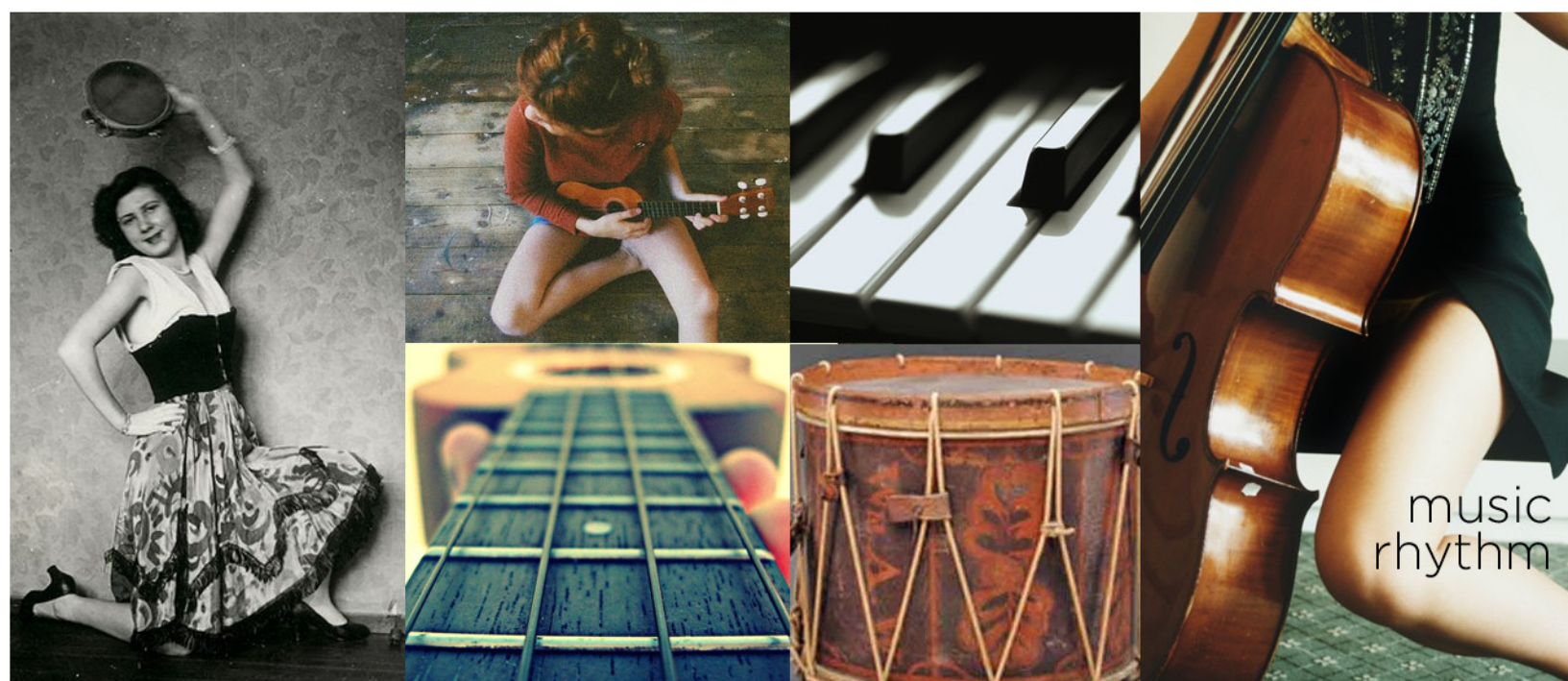
music  
rhythm



pattern  
texture



le voyage  
chic



music  
rhythm