

This hat is started with a provisional cast on and worked from base to crown. The provisional cast on is then picked up, and the brim is worked down from the base. After blocking, the hat is felted and decorated with ribbon and a button.

\$6.95 US

add to basket

view basket

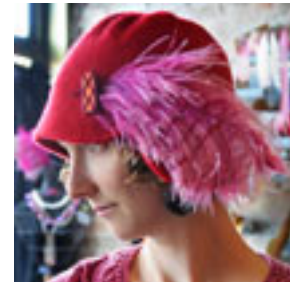
Finished measurements: According to fit. As with final measurements, gauge after felting will depend on the amount of felting you do.

Yarn: 2 skeins D-Moral Classic 2 Ply (100% organic merino, 158 yd/143 m per 1 1/2 oz/50 g) in Sumac #4602

Needles & Notions: size 6 US (4 mm) 16" (40 cm) circular; optional size 8 US (6 mm) 24" (60 cm) circular for brim; size 6 US (4 mm) dptns; size 8 (5 mm) dptns for attached cord; 24" (60 cm) of grosgrain ribbon; button; stitch marker; tapestry needle

Gauge: 22 1/2 sts and 32 rows = 4" (10 cm) in St. at before felting. This pattern presumes you will felt your piece down to about 27 sts and 46 rows = 4" (10 cm)

Construction Note: Short rows used in brim shaping



[View D-Moral Classic 2 Ply at Ravelry](#)

Twist Collective

Last Updated on Sunday, 17 February 2013 12:24

Published on Monday, 13 October 2008 16:17
