

Twist Collective

Last Updated on Sunday, 17 February 2013 12:24

Published on Thursday, 12 February 2009 21:43

Small circular steel basket is attached to the top of your sheepie monkey.

STATUS

add to basket

view basket

Construction Note: center squares worked in the round then steeked (may also be worked flat)

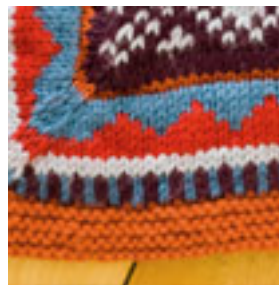
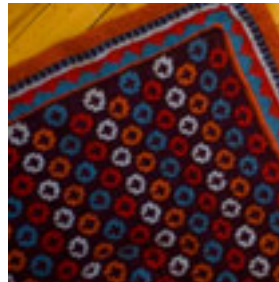
Finished size: Approximately 24" x 41 cm square

Yarn: Valley Yarns Superswash (100% Extra Fine Merino Wool) 57 yds/63 m per 1 1/2 oz/50 g ball
3 balls in 205 Plum
4 balls in 845 Copper
2 balls in 952 Fox Blue
2 balls in 953 Crimson
2 balls in 522 Colonial Blue

Needles & Notions: Size 8 US/5 mm circular needles, 16-140 cm long for center squares; three size 8 US/5 mm circular needles, 40/100 cm long required for borders; four point protectors (outer bands will do); stitch markers (bump pins will do); sewing machine (for circular steek); ammeter or 2-prong 3-lead plug

Design: Project gauge: 21 stitches and 21 rows = 4" x 7 1/2 cm in stockinette stitch with colorwork.

Ball band gauge: 18 stitches and 24 rows = 4" x 7 1/2 cm in plain stockinette stitch. Colorwork usually results in a lighter fabric with similar stitch and row gauges.



[Buy Valley Yarns Superswash at Ravelry](#)

Twist Collective

Last Updated on Sunday, 17 February 2013 12:24

Published on Thursday, 12 February 2009 21:43
