

Twist Collective

Last Updated on Sunday, 17 February 2013 12:24

Published on Thursday, 12 February 2009 21:43

Like flower petals on the wind, just a hint of lace. What more does a girl need?

\$2.99 US

add to basket

view basket

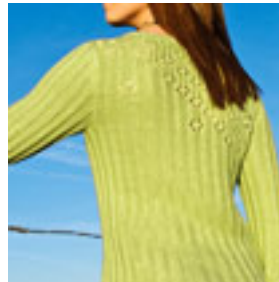
Construction notes: Sleeve length and placement of "laciness" front panels are changeable, but the sweater length cannot be altered without compromising the placement of the diagonal lace panel. For a more fitted version, choose a yarn with more elasticity, such as one with some wool content. Instructions for a sleeveless version included 108 in the manual.

Finished bust measurements: 29 (32 N, 36 S, 40 L, 43 XL, 47 XLL, 51"/72.5 (XS, S), 100.5, 111, 120, 129.5 cm)

Yarn: Love from the Victor Novel Collection by SWEET, Inc. (70% bamboo, 30% silk; 98 yds/90 m per 1 to cat50 gm skein) in K227 Andrew & Sam (light green); with dyes 9 (10, 11, 12, 13, 15, 16) skeins; skein/yard 6 (6, 7, 8, 9, 10, 11) skeins

Needles & Notions: Size 6 US/4 mm circular needle, 24-40"/60-100 cm long or longer; size 6 US/4 mm circular needle, 10-20"/25-50 cm long, or set of four double-pointed needles, size 4 US/3.5 mm circular needle, 10-24"/25-60 cm long, or set of four double-pointed needles, 4 double-pointed needles (Choose needle lengths based on selected garment size); row counter; stitch holders or waste yarn; tapestry needle

Gauge: 21 sts and 28 rows = 4" (10 cm) in St on Size 6 US/4 mm, or size to obtain gauge



[View Love from the Victor Novel Collection by SWEET in Spanish](#)

Twist Collective

Last Updated on Sunday, 17 February 2013 12:24

Published on Thursday, 12 February 2009 21:43
