

Twist Collective

Last Updated on Sunday, 17 February 2013 12:24

Published on Thursday, 12 February 2009 21:43

Changing knit patterns, contrast edging and a cord neckline detail creates a garment of abundance and captivating details.

\$7.88 US

add to basket

view basket

Construction Notes: traditional flat construction

Finished bust measurements: 32 1/2, 34 1/2, 41, 46, 51 1/2, 56.5, 62.5, 70, 77, 128.5 cm

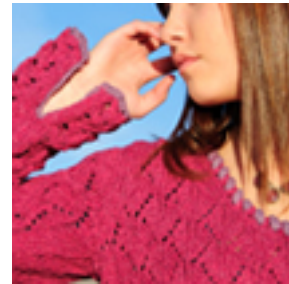
Yarn: Classic Elite Yarns Classic Silk 100% Cotton, 30% Silk, 20% Nylon, 135 yds/122 m per 1 1/4 oz/50 g

SK, 11, 12, 140 Balls 6524 Plum

1 ball 6502 Old Lime

Needles & Notions: Size 7 US/4.5 mm needles, or size to obtain gauge; pair of size 7 US/4.5 mm double-pointed needles for 1 cord; 1 safety pin

Gauge: 19 sts and 28 rows = 4" (10 cm) in St on Size 7 US/4.5 mm, or size to obtain gauge



[Buy Classic Elite Yarns Classic Silk at \\$5.95](#)

Twist Collective

Last Updated on Sunday, 17 February 2013 12:24

Published on Thursday, 12 February 2009 21:43
