

Twist Collective

Last Updated on Sunday, 17 February 2013 12:24

Published on Thursday, 12 February 2009 21:43

With dreamy qualities of a vintage bouclé jacket, a beautiful layer for sunshiners or weekend yoga pants.

\$2,69 US

add to basket

view basket

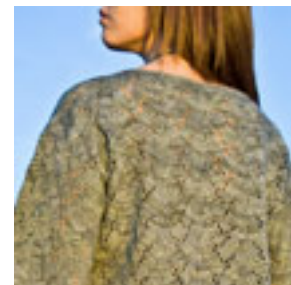
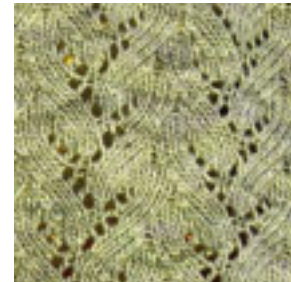
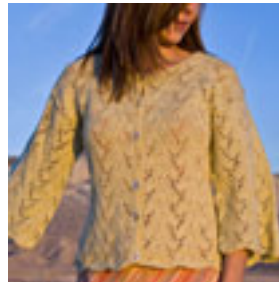
Construction Note: body worked flat in one piece to the armholes then divided for front and back, length can be modified in water area

Finished bust measurements: Chest: 36 (40, 44, 48, 52, 56) / 91.5 (101.5, 112, 122, 132, 142) cm after blocking. Length to shoulder: 22 (22, 23, 23, 23) / 56 (56, 56, 56.5, 56.5, 56.5) cm

Yarn: G, H, T, T, A, B) skeins of Green Mountain Spinnery Soliver Spirit (20% Fine Wool/80% Tencel® Lyocell), 180 yds/164.5 m per 2 oz/57 g, shown in Citrine (yellow) and Spinnery Handspun DK (green, available by special order)

Needles & Notions: Size 7 US/4.5 mm circular needle, 20/74 cm long; size 6 US/4 mm circular needle, 24/100 cm long; stitch holders; markers, as follows

Gauge: 18 sts and 28 rows = 4" (10 cm) in St st



[Buy Green Mountain Spinnery Soliver Spirit at Green Mountain Spinnery](#)

Twist Collective

Last Updated on Sunday, 17 February 2013 12:24

Published on Thursday, 12 February 2009 21:43
