

Twist Collective

Last Updated on Sunday, 17 February 2013 12:24

Published on Monday, 03 August 2009 23:53

An innovative and graceful expression of form. Please note, sweater is worked in broche stitch, with careful instructions included in the pattern.

\$7.88 US

add to basket

view basket

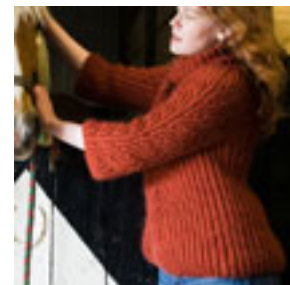
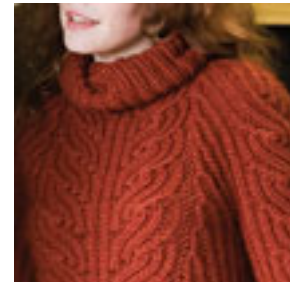
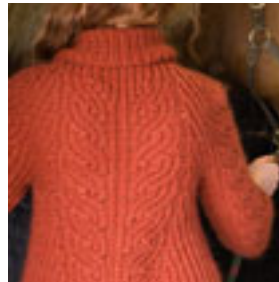
Finished bust measurements: 36% (36), 40% (40), 44% (44), 50% (50), 56% (56), 62% (62) cm. Length: 22 (22), 23, 24, 24 1/2 (24.5, 24.5, 24.5, 24.5) cm. Shown in size 30 1/2 (79) cm.

Yarn: 11 (12, 15, 18, 20 skeins Classic Elite Yarns Arava 80 ply / 80 meter / 1 lb / 453 g skein; 80% Extrafine Merino, 10% Cashmere) in #8855 Russet.

Needles & Notions: Size 10 US / 6 mm circular needle 24" / 60 cm or 32" / 80 cm long, depending on the size you make. Adjust needle size if necessary to obtain correct gauge. Stitch markers, large stitch holder or waste yarn, cable needle, tapestry needle.

Gauge: 12 sts and 20 rows = 4" / 10 cm in half-Broche stitch worked in the rnd. To save time and to ensure accurate sizing, check gauge.

Construction Notes: Body is knit in the round in the underarms. Sleeves are knit flat in the underarms. The pieces are joined, then the yoke is knit in the round through the collar. Center panel instructions are given row-by-row - no charts.



[Buy Classic Elite Yarns Arava in #8855](#)

Twist Collective

Last Updated on Sunday, 17 February 2013 12:24

Published on Monday, 03 August 2009 23:53
