

Twist Collective

Last Updated on Sunday, 17 February 2013 12:24

Published on Monday, 03 August 2009 23:53

A mid-century silhouette inspired by Kim Novak, with woven stitch detailing at the neck and cuffs.

\$7.99 US

add to basket

view basket

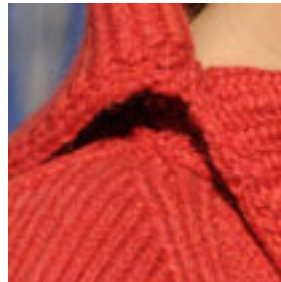
Finished bust measurements: 35 (34, 42, 47, 51, 55, 59) / 89 (84, 106, 119.5, 129.5, 135) cm. Shown in size 35 / 89 cm. Intended to be worn with 0-4" / 0-10 cm of ease.

Yarn: 11 (12, 14, 15, 17, 18, 20) skeins Frog Tree Merino Melange 2-ply (100% wool) 182 m per 1 1/2 oz / 50 g skein; 100% Merino Wool in #937 Rust Red.

Needles & Notions: Size US 7 / 4.5 mm circular needle, 32" / 80 cm long. Size US 8 / 5 mm circular needle, 24" / 60 cm or 32" / 80 cm long. Size US 10 1/2 / 6.5 mm needles. Adjust needle size if necessary to obtain correct gauge. Stitch holder, stitch marker, tapestry needle.

Gauge: 18 sts and 24 rows = 4" / 10 cm in St st, using US 8 / 5 mm needles. 28 sts and 22 rows = 4" / 10 cm in Women st, using US 10 1/2 / 6.5 mm needles. To save time and to ensure accurate sizing, check gauge.

Construction Note: Yoke is separate pieces and sewn together. All the sleeves.



[Buy Frog Tree Merino Melange 2-Ply at Lion](#)

Twist Collective

Last Updated on Sunday, 17 February 2013 12:24

Published on Monday, 03 August 2009 23:53
