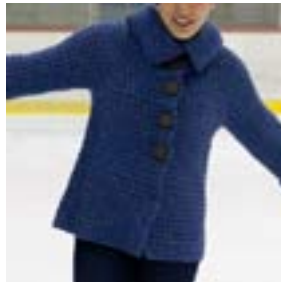


Twist Collective

Last Updated on Sunday, 17 February 2013 12:24
Published on Wednesday, 27 October 2010 11:22



Simple knit and purl stitches create a waffle textured pattern which adds warmth to this A-line raglan jacket. The turn back cuffs allow you to adjust the sleeve length to your liking. A wide collar frames the face.

Twist Collective

Last Updated on Sunday, 17 February 2013 12:24

Published on Wednesday, 27 October 2010 11:22

\$7.00 US

add to basket

view basket

Finished measurements:

Bust: 33 (36 ½, 40 ½, 44, 47 ¾, 51 ½, 55)" / 84, (92.5, 103, 112, 121.5, 131, 139.5) cm

Shown in size 36 ½" / 92.5 cm

Intended to be worn with 1–2" / 2.5–5.5 cm ease.

Yarn: 8 (8, 10, 11, 12, 13, 14) skeins Briggs & Little Atlantic (136 yds / 123 m per 4 oz / 113 g skein; 100% Wool) in Blue Heather

Needles & Notions:

Size 8 US / 5 mm knitting needles

Size 9 US / 5.5 mm circular needle, 40" / 100 cm long

Size 9 US / 5.5 mm set of 4 double-pointed needles

Size 9 US / 5.5 mm 16" / 40 cm circular needle for larger sizes

Stitch markers, tapestry needle, 5 (5, 5, 5, 6, 6, 6) buttons, 1 ½" / 38 mm diameter

Gauge: 13 sts and 22 rows = 4" / 10 cm in Reversible Waffle pattern after blocking; 13 sts and 20 rows = 4" / 10 cm in

Stockinette stitch

Construction Notes: This jacket is worked in one piece from the bottom up. The lower body is worked to the armholes, then set aside while the sleeves are worked. The body and sleeves are joined, and the yoke is worked up to the neck with decreases along the raglan lines, then flows into the collar. The waffle pattern is fully reversible, and is presented in row-by-row instructions.

This is a pdf download, not a mailed pattern. An email with a link to download will be sent to the same email used for your paypal account. These links expire after 3 downloads or 100 hours (whichever comes first).