

*Every Friday we feature one of the garments from the magazine in a post about styling. We suggest different ways to wear the garment in question using mock-ups from [Polyvore](#). We encourage readers to tell us what they think about these outfits via our [Facebook page](#) or [Twitter](#), and if folks want to make their own outfits, please tweet them at us with the hashtag #twiststyle. You can find all of the Style Friday posts [here](#).*

---

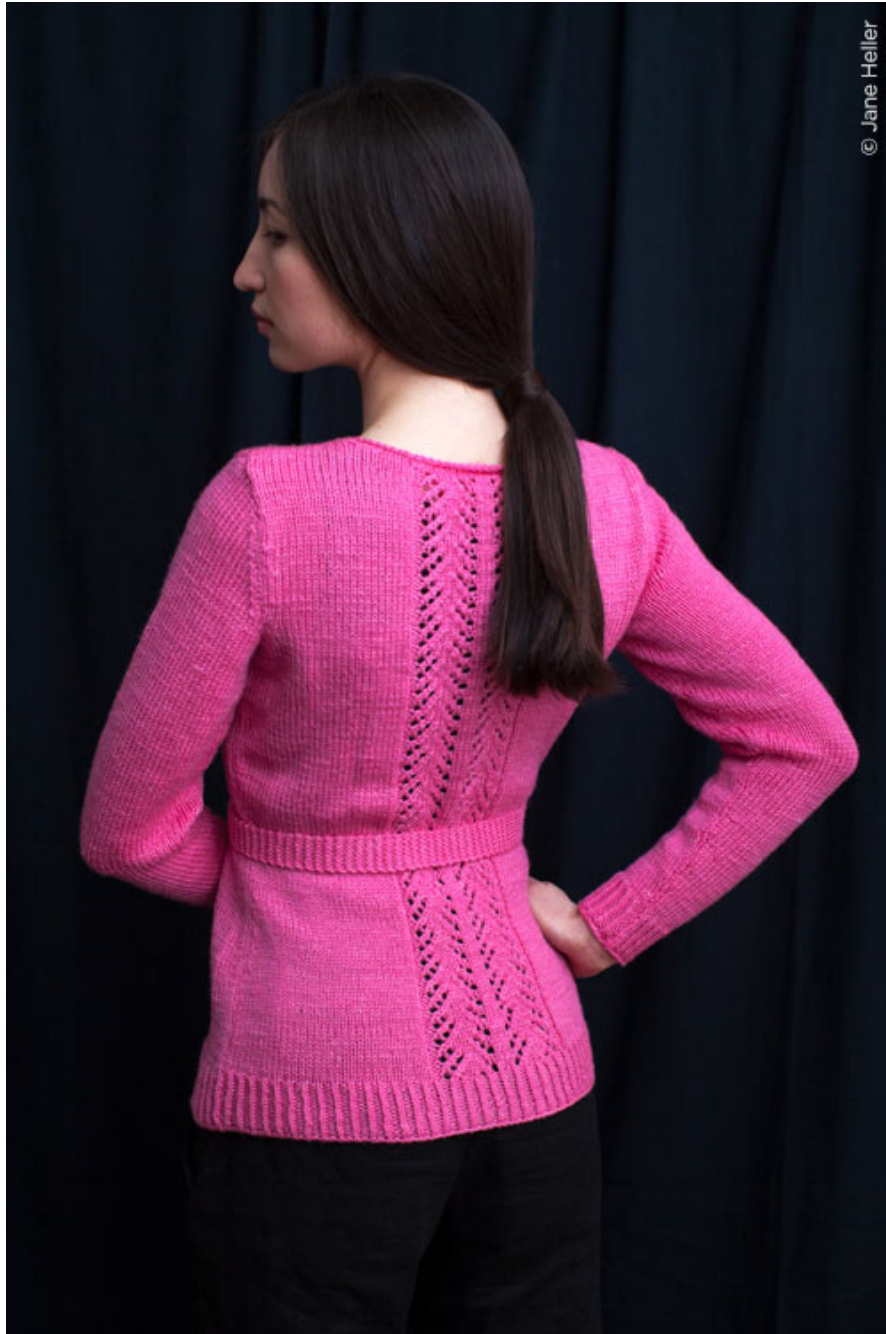
Happy Friday friends! By the time you are reading this, I am probably in the New York public library, working on my last term paper of the semester. I'm going to a wedding this weekend in Brooklyn, but I have to finish some school work before I can start celebrating.

As I write this I am trying to figure out if I can whittle down my footwear selection to just two pairs, and if I decide if it's wildly unreasonable for me to bring wildly impractical shoes to a city where walking all day is pretty much the norm. I have a really hard time packing for trips because I dress according to my mood, and I generally travel with only a backpack, so my choices are so limited by what I can fit into the bag. I can't really complain though, I'm going to New York! The dress code for this wedding is "dress in what makes you happy" so I think there is going to be some seriously fun fashion going on. I'm basically going to be wearing a mirrorball, and one of the betrothed will be in [these](#) shoes.

You probably want to know what sweater we're playing with this week. It's a great one! [Alenia](#) is versatile and super pretty.



I really love the slightly raw neckline, and that the lace panels are echoed on the back panel of the cardigan. I am also really into the crystal buttons, but you could choose plainer ones to make it a little less precious. The belt adds a retro touch, but you can also leave it out on days when it doesn't mesh well with your outfit.



I've been watching a lot of (the original) [90210](#) and am having a serious 90s revival, so I want to wear Alenia every day, open over a slightly ill fitting floral dress that ties in the back; a high femme substitute for grunge's flannel shirt. You can imagine that one yourself. Here are some other ideas.



You can tell I have summer on the brain. The outfit on the far right is inspired by popsicles.

Have a great weekend everyone. How would you wear [Alenia](#)?