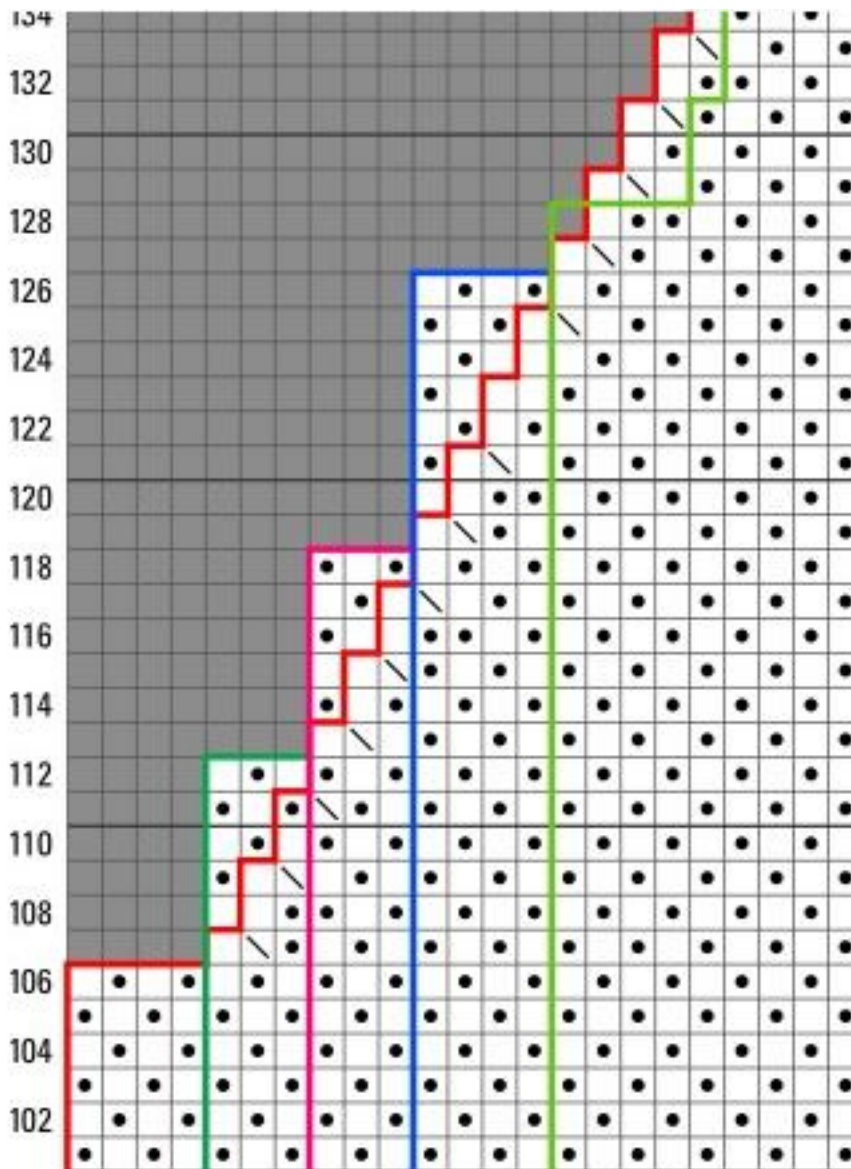


A number of people have asked how to make a larger version of Sylvi. The pattern has directions for up to a finished bust measurement of 47", which in a stretchy pattern like seed stitch is probably forgiving enough for a few inches of negative ease. But what do you do if you're a girl with 54" or so of glory to clothe?

Sylvi has one chart and one neck measurement for all sizes, the result of raglan decreases that begin at progressively lower points on the back chart as the sizes go up.



For every size increase, Sylvi has an additional three or four stitches on either side of the chart, and the decreases begin (for the most part) about six rows earlier. So if you are looking at the chart, you can see that each new size decrease looks like a step, and logically, you can project what the next size or two would look like. Add a new size in 3 inch increments (say 50" and 53") by adding four stitches for each new size up on either side of the chart. Draw it directly on the chart

with a pencil for security's sake. Count four rows out and six rows down for each new size increment for the sleeve decreases, and thus make your own modification. Be certain that when you knit your fronts, that you match your decreases there to the back.

Raglan sleeve decreases need counterparts on the sleeves too, so keep good notes, and make sure you increase the sleeve stitch counts accordingly, and have as many decreases in your sleeves as you made for your front and back pieces.

Keep in mind that beginning the sleeve decreases earlier in the chart will shorten the length of the sweater to the underarm, and that there is a limit to the number of rows you can add to the distance between the underarm and the neck, so I would recommend this guideline for no more than two sizes up.

My friend Kelly made hers two sizes up following this general rule, and she generously sent me her numbers and how she did it.

Basically all I did was looked at the L and XL and sized mine to a 2XL (approx 52") based on the difference between the sizes. Broken down, here are the modifications:

### Back

CO 118, adding the extra 8 stitches to each side, 4 stitches per side in Seed Stitch. Follow chart as written (just remember you have the 4 extra stitches on each side) through row 96. I made the armholes deeper to accommodate the extra stitches. So I started decreasing on row 97. I BO 4 sts at the beginning of row 97 & 98. Starting at row 99 work decreases at each side of every other row as show in chart: k2tog on right, ssk on left side. All extra stitches will be used up and you will end up at the neck the same as all sizes.

### Left Front

CO 60 sts, follow directions as written. The 4 extra stitches will end up on the side seam. I adjusted the rate of decreases on the front to accommodate the extra stitches. After the decrease on row 11, I decreased every 8th row 6 times, then every 6th row 6 times. You will have 47 stitches when you complete row 96. Begin raglan decreases on row 97 following directions as written.

### Right Front

CO 60 sts, follow directions as written. Adjust decrease rate as you did on the left front. Begin raglan decreases on row

98.

### Sleeves

Follow direction as written until sleeve measures 22" (I didn't make the sleeves any wider. I find most sweaters are a little baggy there for me). I added 8 extra rows and adjusted the decreases on the sleeve to make sure my raglan shaping was the same length as the front and back. Once you start raglan shaping repeat decreases every 4th row 12 more times, then every other row 3 times.

When you get to finishing you should follow directions as written. All stitch counts should be the same as the pattern.

If you refer to the pattern, you'll see that each size up requires another skein or so, so by adding a

size increment, you'll probably need an additional skein, or 136 yards, perhaps another for two

sizes up. But then again, you might not. Happily, it's a reasonably priced yarn, so live a little.

If you live outside of Canada, the famous Halcyon Yarns of Bath, Maine now offers [Atlantic](#) on their website, and will ship abroad as well. We're so happy they are supplying this classic yarn for the rest of us. Tell them Twist Collective sent you!