

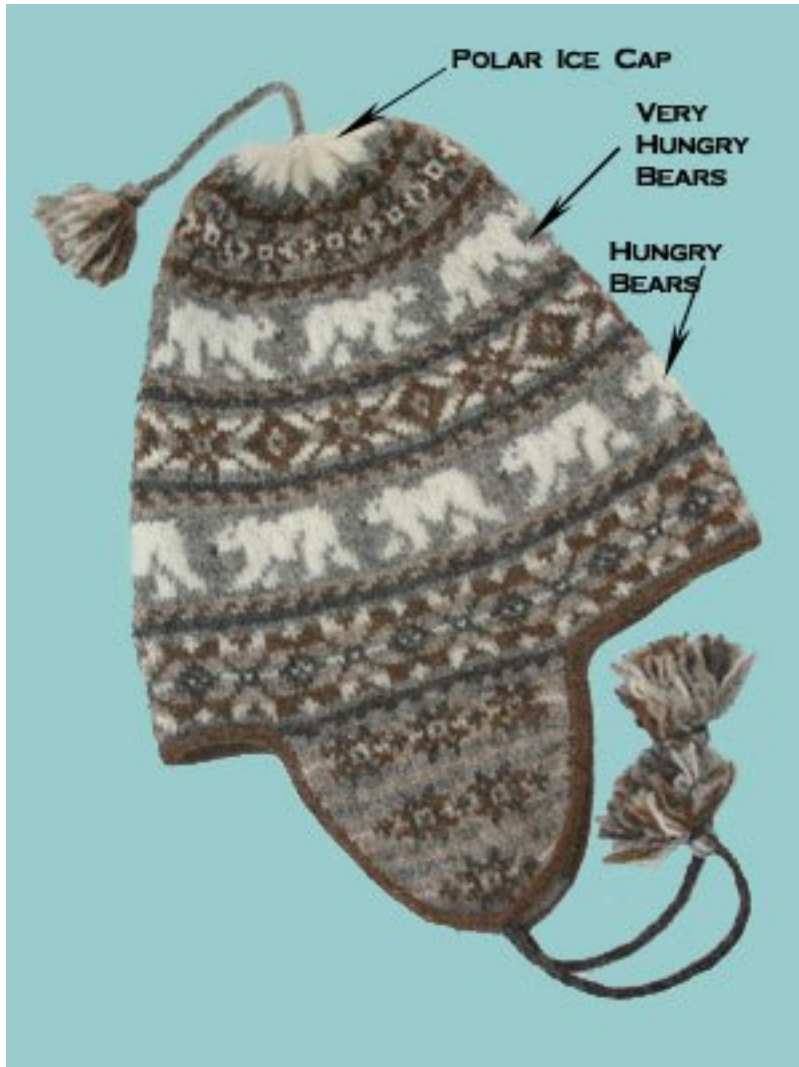


by Mary Ann Stephens, originally published on her blog [Two Strands](#).



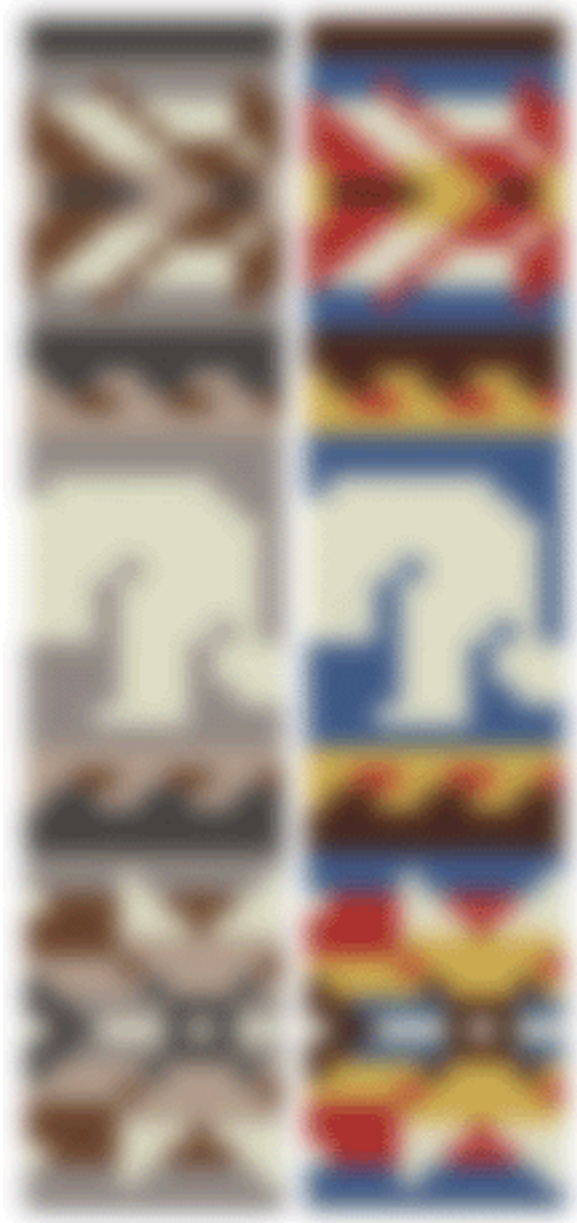
That's my Polar Chullo. The yarn pack featuring Jamieson's Shetland Spindrift is available [here](#).

A lot of thoughts about movement went into this: The natural colorway moves back in time with a retro feel. The bears move their legs from one motif to another as they amble around. Some of the bears get just a bit leaner as they wander around toward the top. They're "stranded" – they can't help it! But it's just by a stitch – can you find it?



If you're moved to knit the design but want different colors, I'm busy putting a few alternate colorways together. At 9 sts/inch, I'd recommend either the Spindrift or [Dale Baby Ull](#) (which I used for my [Postwar Mittens](#), which were knit at exactly the same gauge.) Here are some colorways to consider and I'll add more as they become available:

Some traditionally-inspired Spindrift possibilities:



My delight with Spindrift at 9sts/inch has prompted me to start carrying it at Kidsknits. Both of these colorways are available and I'll post more as my Spindrift stock expands.

Some Baby Ull options:



Just the tip of the iceberg, my darlings!