

Lightly folded burrows under hooded area, for slipping by hands on a easy wearing. This convenient reversible hooded shawl is best at a unisexed form page and fitted slightly in the drape after assembly.

24.99 US

add to basket

view basket

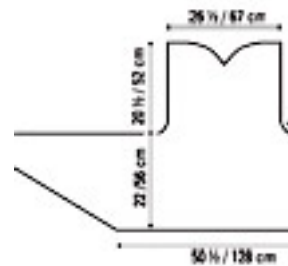
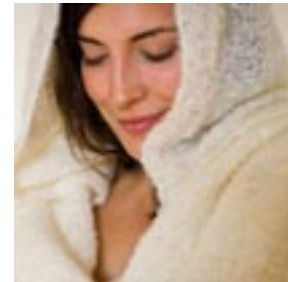
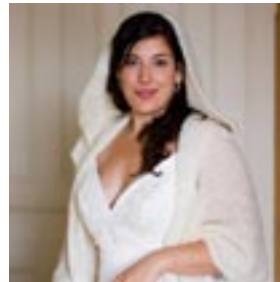
Finished measurements: 22 x 124 1/2 x 256 x 216.5 cm

Yarn: 7 balls of Sweet Medium Weight Baby Merino (100% merino, 200 g/700 in per 1.5 mm/5.0 g in basket)

Needles & Notions: Size 10 US (6.5 mm) 30" (80 cm) circular

Shape: 13 sts and 17 rows x 4" (10 cm) over 50 stitches falling; 14 sts and 19 rows x 4" (10 cm) over 50 stitches falling

Construction Notes: Knit in one piece from yoke to pane



[Buy the Sweet Medium Weight Baby Merino at Amazon.com](#)

