

On the east or in heart of the fog, this is the story of America.

SKU US

add to basket

view basket

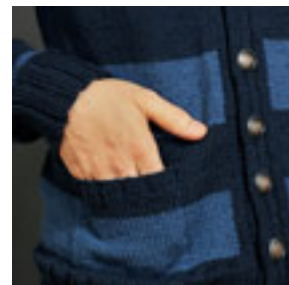
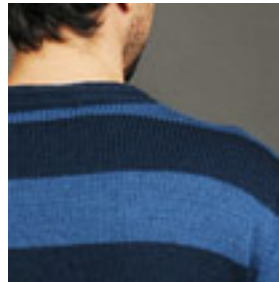
**Construction Note:** body worked in one piece, sleeves sewn in, button bands knit separately and sewn on

**Finished chest measurements:** 37 (41, 46, 52, 57) / 94 (104, 114.5, 124.5, 134.5, 140) cm

**Yarn:** Louisa Grey Sport Weight (100% Merino Wool 225 yds/205 m per 3 1/2 oz/100 g skein)  
1 (A, C, E, G) skeins in 12 (12)ggs  
2 (D, 4, 6, 8) skeins in 27 (French Blue)

**Needles & Notions:** Size 3 US/3.25 mm circular needle, 24" (60 cm) long, 1/2" (1.25 cm) buttons, stitch markers, stitch holder

**Gauge:** 24 sts and 32 rows to 4" (10 cm) over Ss at using size 3 US/3.25 mm needles, or size to obtain gauge



[See Louisa Grey Sport Weight at 2020](#)

