

Slight notching at the button placket and sleeve shaping detail make this henley extra feminine.

\$7.99 US

add to basket

view basket

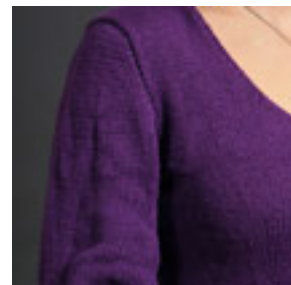
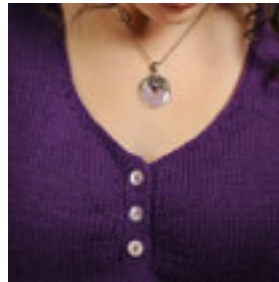
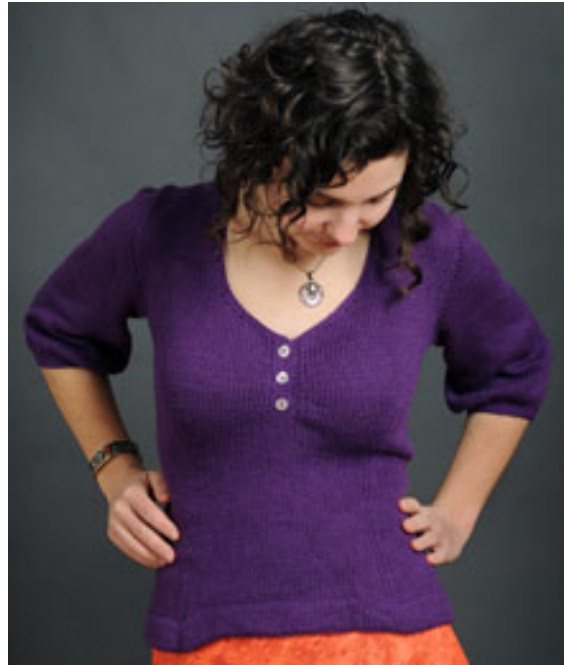
Construction Notes: worked in the round, body starts, seamline set-in sleeves, stockinette and brim stitch, single crochet around neckline

Finished bust measurements: 33 1/2, 33, 36, 38, 42 1/2, 45, 48, 51, 54 1/2, 57, 60, 62 1/2, 64, 61, 6, 90, 102, 114.5, 122, 128.5, 137.5, 145, 152.5, 160 cm

Yarn: 6/16, 6/7, 8, 8, 8, 8, 10, 10, 11, 11 skeins Kollege Yarns 100% 100% Merino Wool 174 yds/159 m per 3 1/2 oz/100 g skein in 7002 Eggplant

Needles & Notions: Two sets 5 US/3.75 mm circular needles, 24/101 cm long, size 5 US/3.75 mm double pointed needles, size 5 US/3.75 mm crochet hook, three 1/16-27 mm buttons, stitch markers, stitch holders, two row counters or pen and paper

Gauge: 22 sts and 28 1/2 rows = 4" (10 cm) in St 1 or on size 5 US/3.75 mm, or size to obtain gauge



[Buy Kollege Yarns US & UK at Ravelry.com](#)

