

Traditional checked work made modern by adding pattern scale and vibrant color.

\$7.68 US

add to basket

view basket

Construction Note: worked in the round then steeked, edgeless knit on

Finished chest measurements: 34 (36, 40, 46, 50, 54) / 86.5 (91.5, 102, 117, 132, 137) cm

Yarn: Sunday Kith Yarn in the following

Merino 2-ply (50% Merino, 5% Cashmere) 246 yds/225 m per 1 1/2 oz/50 g skein: 3 (2, 3, 4, 4, 4) skeins in Espresso

Elise 2-ply (100% Fine Merino) 246 yds/225 m per 1 1/2 oz/50 g skein:

2 (2, 3, 3, 3, 4) skeins in Sage  
2 (2, 2, 2, 2, 4) skeins in Plaster  
2 (2, 2, 2, 2) skeins in Pashu  
1 (1, 1, 1, 1, 1) skein in Sage

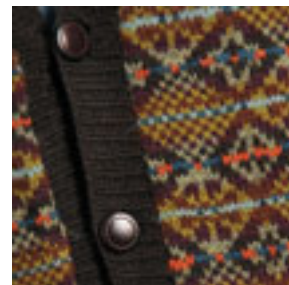
Angelic 2-ply (55% Merino/25% Angora) 246 yds/225 m per 1 1/2 oz/50 g skein:

2 (2, 2, 2, 2) skeins in Chateau  
1 (1, 1, 1, 1, 1) skein in Sage

Biggeston 2-ply (100% Merino Double Twist) 246 yds/225 m per 1 1/2 oz/50 g skein: 1 (1, 1, 1, 1, 1) skein in Pumpkin

Needles & Notions: Size 2 US/3.75 mm circular needle, 16" (40 cm) and 24" (60 cm) long; size 3 US/3.25 mm circular needle, 24" (60 cm) long; set of the double-pointed needles size 3 US/3.25 mm, which includes: topstitch needle, waste yarn, sewing machine and thread; buttons, size 12 (25 mm) buttons

Gauge: 30 sts and 30 rows over 4" (10 cm) in pattern



[See Sunday Kith Yarn in Sunday Kith](#)

