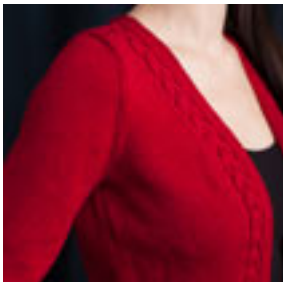




-



-



-

The cardigan pares down to perfection with cables and lace.

\$7.00 US

add to basket

view basket

Finished measurements:

Bust: 28 (31 ¼, 34, 37 ¾, 40, 43 ¼, 46, 49 ¾, 52, 55 ¼)" / 71 (79.5, 86.5, 96, 101.5, 110, 117, 126.5, 132, 140.5) cm

Length: 20 ¼ (21, 22, 22 ¾, 23 ½, 24, 24 ½, 24 ¾, 25 ½, 25 ¾)" / 51.5 (53.5, 56, 58, 59.5, 61, 62, 63, 65, 65.5) cm

Shown in size 34" / 86.5 cm

Intended to be worn with 1–2" / 2.5–5 cm ease.

Yarn:

900 (1100, 1200, 1300, 1400, 1600, 1700, 1800, 2000, 2100) yd / 823 (1006, 1097, 1189, 1280, 1463, 1554, 1646, 1829, 1920) m Catherine Lowe Couture Yarns CL I #5A (80% Extrafine Merino, 20% Cultivated Silk) in Cardinal

Needles & Notions:

Size 6 US / 4 mm circular needles, 24" / 60 cm long

Stitch markers in two colors, cable needle, stitch holders, tapestry needle

Gauge:

24 sts and 32 rows = 4" / 10 cm in Stockinette stitch

Sunburst Lace panel measures about 3 ½" / 9 cm wide after blocking

Braided Cable measures about 1 ½" / 4 cm wide

Construction Notes: This open front cardigan with a V-neck, waist shaping, and set-in sleeves, is worked from the bottom up in separate pieces and sewn together. The back features a lace motif framed by cables. Those cables are echoed on the fronts. The cable and lace patterns are given in chart form only. Garter stitch edging finishes each piece.

This is a pdf download, not a mailed pattern. An email with a link to download will be sent to the same email used for your paypal account. These links expire after 3 downloads or 100 hours (whichever comes first).