

A relaxed yet casual cardigan with an air of mystery and regal elegance. The lace pattern for the attached scarf is reversible.

\$7.88 US

add to basket

view basket

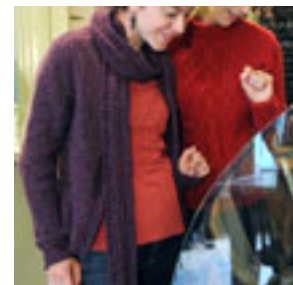
Finished bust measurements: 32 1/2 (35 1/2, 39 1/2, 43 1/2, 46, 51 1/2 / 82.5 (91, 100, 108, 117, 129.5) cm

Yarn: 10 (11, 12, 14, 15, 16) skeins Pilsbuckles Knitting Luscious Tweed (80% wool, 10% silk, 115 yds/105 m per 1 1/2 oz/50 g of Aranweight)

Needles & Notions: size 6 US (4 mm) 47" (120 cm) circular tapered needle, stitch holder

Gauge: 19 sts and 27 rows = 4" (10 cm) in 2x1

Construction Note: Body and sleeves knit flat then seamed, scarf knit onto body



[View Pilsbuckles Knitting Luscious Tweed at Pilsbuckles Knitting](#)

