

This hat is started with a provisional cast on and worked from base to crown. The provisional cast on is then picked up, and the brim is worked down from the base. After blocking, the hat is felted and decorated with ribbon and a button.

\$48 US

add to basket

view basket

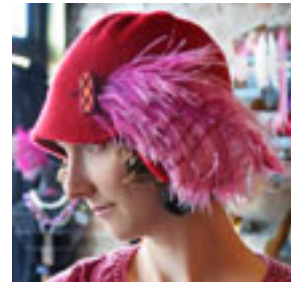
**Finished measurements:** According to fit. As with final measurements, gauge after felting will depend on the amount of felting you do.

**Yarn:** 2 skeins D-Moral Classic 2 Ply (100% organic merino, 158 yd/143 m per 1 1/2 oz/42 g) in Sumac #4602

**Needles & Notions:** size 6 US (4 mm) 16" (40 cm) circular; optional size 8 US (6 mm) 24" (60 cm) circular for brim; size 6 US (4 mm) dpm; size 8 (5 mm) dpm for attached cord; 24" (60 cm) of grosgrain ribbon; button, stitch marker, tapestry needle

**Gauge:** 22 1/2 sts and 32 rows = 4" (10 cm) in St. at before felting. This pattern presumes you will felt your piece down to about 27 sts and 46 rows = 4" (10 cm)

**Construction Note:** Short rows used in brim shaping



[See D-Moral Classic 2 Ply at Ravelry](#)

