

Lightly folded lacework under hooded collar, for slipping by hands on a easy wearing. This convenient reversible hooded shawl is best at a semi-formal home page and fitted tightly in the dryer after assembly.

24.99 US

add to basket

view basket

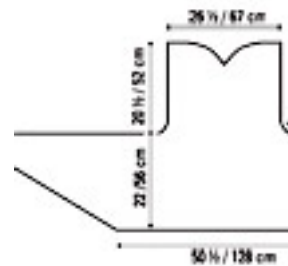
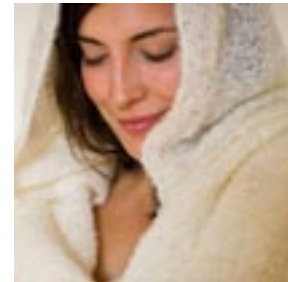
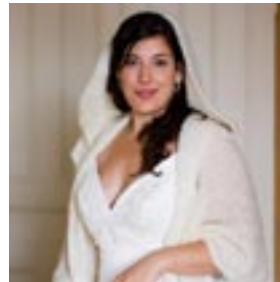
Finished measurements: 22 x 124 1/2" (56 x 316.5 cm)

Yarn: 7 balls of Sweet Medium Weight Baby Merino (100% merino, 200 g/70.5 oz per 1 1/2 oz/42 g in ball)

Needles & Notions: Size 10 US (6.5 mm) 30" (80 cm) circular

Gauge: 12 sts and 17 rows = 4" (10 cm) over St stockinette fabric; 14 sts and 19 rows = 4" (10 cm) over St water falling

Construction Notes: Knit in one piece from yoke to pane



[See the Sweet Medium Weight Baby Merino at Amazon.com](#)

