

The sweater you need for the rest of your life: classic lines for relaxed polish, or the perfect canvas for creative accessories.

\$4.99 US

add to basket

view basket

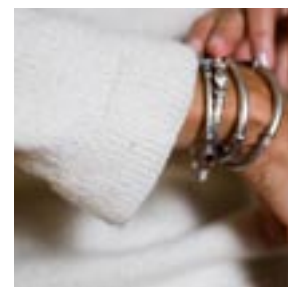
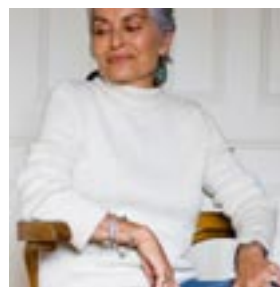
Finished bust measurements: 33, 35, 37, 39, 41, 43, 45, 47, 49, 51, 53, 55(1) 56, 58, 60, 64, 68, 70, 74, 78, 82, 86, 90, 94, 100, 114, 118, 124, 130, 136, 142 cm

Yarn: 5, 6, 6, 6, 7, 7, 7, 8, 8, 8, 9 skeins Fuchsia Fiber & Design's Corino Silk Alpaca (25% fine Corino wool, 25% Bontayn silk, 20% perle alpaca, 100 yds/74 m per 2 1/4 oz/70 g) in Natural

Needles & Notions: size 7 US (4.5 mm) 32" (80 cm) and 16" (40 cm) circulars, size 5 US (3.75 mm) 32" (80 cm) and 16" (40 cm) circulars, size 7 US (4.5 mm) dpns, size 5 US (3.25 mm) dpns, stitch markers, tapestry needle

Gauge: 20 sts and 28 rows = 4" (10 cm) in St st on larger needles

Construction Notes: Body and sleeves knit in round to armholes



[Buy Fuchsia Fiber & Design's Corino Silk Alpaca or Fuchsia Fiber & Design's Silk Secretly From](#)

