

A fitted sweater for mademoiselle, with a lace yoke and jewel button details at the throat and sleeve bands, to set both needles and hearts aflame.

[add to basket](#)

[view basket](#)

Finished bust measurement 28 (31, 34, 37, 40, 43, 46, 49, 52, 55, 58, 61)" / 71 (79, 86, 94, 102, 109, 117, 124, 132, 140, 147, 155) cm

Classic elite Yarns classic one fifty (100% Merino; 150 yds / 137m per 1 . oz / 50g) 3 (3, 4, 4, 4, 4, 5, 5, 5, 5, 6, 6) skeins in color #7255 (Scarlet) / Classic elite Yarns Silky Alpaca Lace (70% Alpaca / 30% silk; 460 yds / 420m per 1 . oz / 50g) 2 (2, 2, 2, 2, 2, 2, 3, 3, 3, 3, 3) skeins in color #2432 (Garnet)

(The long sleeved version will require an additional 1 (1, 1, 1, 2, 2, 2, 2, 2, 2, 2, 2) skeins of Silky Alpaca only.)

Two size 6 US / 4.0 mm circular needles around 24" / 60 cm long

Size 6 US / 4.0 mm DPNs (optional: for sleeve, if you do not want to use a 2-circular needle method)

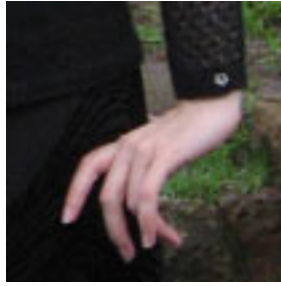
Size 0 US / 2.0 mm circular needle of any length

Two size 2 US / 2.75 mm circular needles of any length for picking up stitches around armscye



Size C-2 / 2.75 mm crochet hook

3 buttons that are approximately 1/4" / .6 cm wide; Stitch markers in more than one color, including 2 locking (or split-ring) markers; Stitch holders; tapestry needle; Sewing needle



Design: 18 sts and 33 rows = 4" / 10 cm over St st. using one strand of CEY classic one fifty and one strand of CEY Silky Alpaca held together on size 6 US / 4 mm needles

21 sts and 24 rows = 4" / 10 cm over lace pattern using one strand of CEY Silky Alpaca on size 6 US / 4 mm needles

Construction Note: Bottom up construction with option for long sleeves

---