

Light hooking at the button placket and sleeve shaping detail make this henley extra feminine.

\$7.99 US

add to basket

view basket

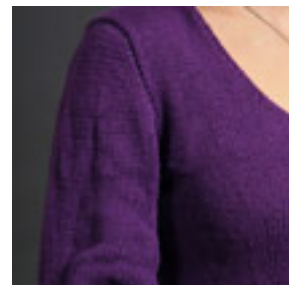
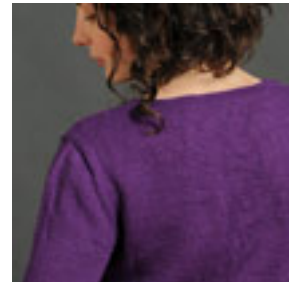
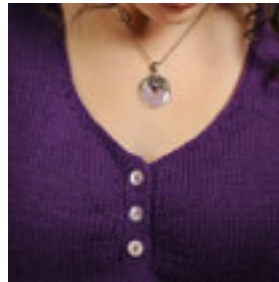
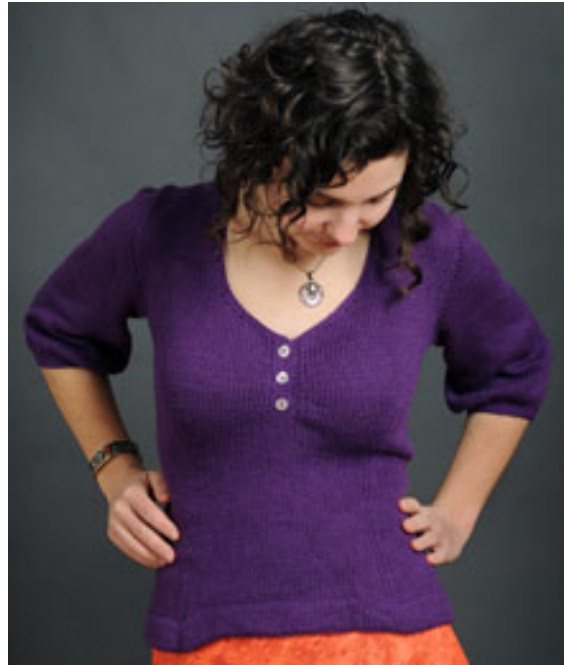
Construction Notes: worked in the round, body starts, seamless set-in sleeves, stockinette and bun stitch, single crochet around neckline

Finished bust measurements: 32 1/2, 33, 36, 38, 42 1/2, 45, 48, 51, 54 1/2, 57, 60, 62 1/2, 64, 66 1/2, 68, 70, 74 1/2, 76, 78, 82, 84, 86, 90, 92, 94 1/2, 96, 100, 104, 106, 108, 112, 114, 118, 122, 124, 128, 132, 136, 140, 144, 148, 152, 156, 160 cm

Yarn: 6 (6, 6, 7, 8, 8, 8, 10, 10, 11, 11) skeins Kollege Yarns 100% 100% Merino Wool, 50% Wool, 174 yds/159 m per 3 1/2 oz (100 g skein) in 7000 Eggplant

Needles & Notions: Two sets 5 US/3.75 mm circular needles, 24" (61 cm) long, size 5 US/3.75 mm double pointed needles, size 5 US/3.75 mm crochet hook, three 1/2" (12.7 mm) buttons, stitch markers, stitch holders, two row counters or pen and paper

Gauge: 22 sts and 28 1/2 rows = 4" (10 cm) in St or on size 5 US/3.75 mm, or size to obtain gauge



[Buy Kollege Yarns USA Ltd at Ravelry.com](#)

