

Like flower petals on the wind, just a hint of lace. What more does a girl need?

22.99 US

add to basket

view basket

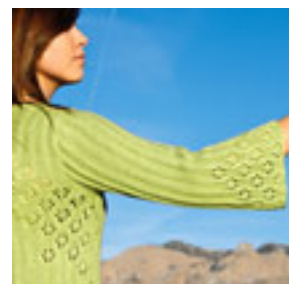
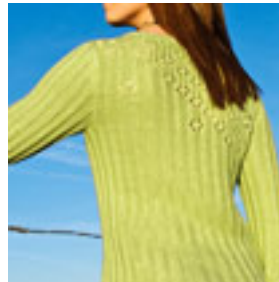
**Construction notes:** Sleeve length and placement of "laciness" front panels are changeable, but the sweater length cannot be altered without compromising the placement of the diagonal lace panel. For a more fitted version, choose a yarn with more elasticity, such as one with some wool content. Instructions for a alternative version included 108 in the manual.

**Finished bust measurements:** 29 (32 N, 36 S, 40 L, 43 XL, 47 X), 51" / 72.5 (83, 93, 103.5, 111, 120, 129.5) cm

**Yarn:** Love from the Vicky Howell Collection by SWEETC, Inc. (70% bamboo, 30% silk; 58 ply/90 per 1 to cat/50 gm skein) in K227 Andrew & Sam (light green); with dyes 9 (10, 11, 12, 13, 15, 16) skeins; skein/yard 6 (6, 7, 8, 9, 10, 11) skeins

**Needles & Notions:** Size 6 US/4 mm circular needle, 24-40"/60-100 cm long or longer; size 6 US/4 mm circular needle, 16-20"/40-50 cm long, or set of four double-pointed needles, size 4 US/3.5 mm circular needle, 16-24"/40-60 cm long, or set of four double-pointed needles, 4 double-pointed needles (Choose needle length based on selected garment size); row counter; stitch holders or waste yarn; tapestry needle

**Gauge:** 21 sts and 28 rows = 4" / 10 cm in St on Size 6 US/4 mm, or size to obtain gauge



[View Love from the Vicky Howell Collection by SWEETC in Vancouver](#)

