

A leather tie, a rustic yarn, and relaxed stitches combine for urban sophistication. Please note, stitch pattern is given in chart form only.

17-88 US

add to basket

view basket

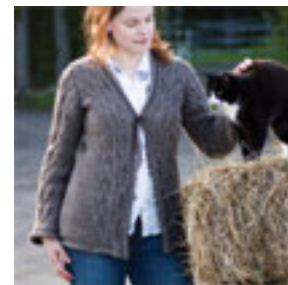
Finished bust measurements: 36 (40, 44, 48, 52) / 91.5 (101.5, 112, 122) cm. Recommended ease: 2-7" / 5-7.5 cm. Shown in size 36" / 91.5 cm.

Yarn: 10 (11, 12, 13, 14 skeins) Poudre Filor & Designs Upland Wool & Alpaca (approximately 140 yds / 128 m per 2.5 oz / 62.5 g skein; 80% Wool, 20% Alpaca) in Natural

Needles & Notions: Size 7 US / 4.5 mm straight needles, Size 7 US / 4.5 mm circular needles, 40-47" / 100-120 cm long. Adjust needle size if necessary to obtain correct gauge. Stitch markers, cable needle, 36" / 92 cm length of leather lace, cut in 2 lengths of 18" / 46 cm.

Gauge: 20 sts and 24 rows = 4" / 10 cm in Stockinette stitch. 20 st Back of Sleeve Panel (Charts 1, 2 & 3) measures approx. 5" / 14.5 cm wide. 24 st Front Edge Panel (Charts 1 & 2, or 3 & 2) measures approx. 3.24" / 8.5 cm wide. To save time and to ensure accurate sizing, check gauge.

Construction Notes: Yarn is separate pieces and sewn together. Sew in sleeves. Leather tie closure. Cable and lace pattern given in chart form only.



[Buy Poudre Filor and Designs Upland Wool and Alpaca.](#)

[Poudre Filor and Designs](#)

