

A dress lace pattern and a lace hemming collar for a sweater with just about as much drama as a girl needs. Please note that lace in the pattern is in chart form only.

17.88 US

add to basket

view basket

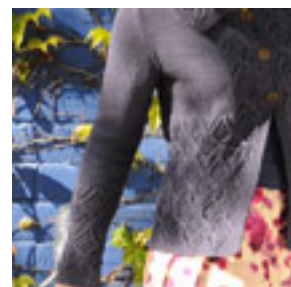
Finished bust measurements: 29 1/2 (34, 38, 42, 46, 50), 54 1/2, 58 1/2 (75, 80.5, 86.5, 92.5, 98.5, 104.5, 110.5, 116.5, 122.5, 128.5, 134.5) cm. Shown in size 34 / 86.5 cm.

Yarn: 12 (13, 14, 15, 16, 17, 18, 21) skeins Kollage Yarns Corralino (105 yds / 96 m per 1.5 oz / 50 g skein, 100% Cori) in #5217 Maroon.

Needles & Notions: Size 4 US / 3.5 mm knitting needles. Size 3 US / 2.5 mm knitting needles. Adjust needle size if necessary to obtain correct gauge. Size 6-4 / 3.5 mm crochet hook, tapestry needle, cable needle, stitch markers, 3 buttons 1" / 25 mm diameter.

Gauge: 22 sts and 30 rows = 4" / 10 cm in Doublebed stitch or using larger needles. 23 sts and 32 rows = 4" / 10 cm in Loretta Lace pattern using larger needles. To save time and to ensure accurate sizing, check gauge.

Construction Note: Knit in pieces. Lace and cable pattern is charted only - see how-to video instructions.



[See Online Content & Downloads](#)

